

# Door Bumper Installation Instruction Sheet

※ Please read the installation instructions before installing.

※ Please do not dispose the installation sheet after installation, instead please pass it to the product user.

AC-777

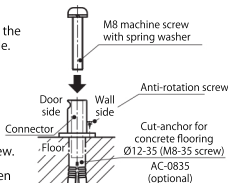
## ■ Floor installation

※ Please install the connector with the “-” mark facing the door when the door is opened to the preferred angle.

### ● Concrete flooring

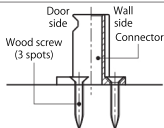
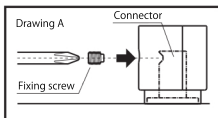
- ① Punch cut-anchor (optional) Ø12-35 (AC-0835) into the flooring.
- ② Fix connector with M8 machine screw with spring washer and finish installation with anti-rotation screw.

Caution: Please beware of cut-anchor popping out when uninstalling this product.



### ● Wooden flooring

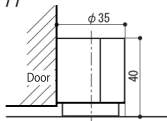
- ① Please use the provided wood screws to install connector to the floor in 3 spots.



Please screw fixing screw with a phillips screwdriver.

## ■ Dimension

AC-777



## ⚠ Caution regarding product usage

- The load capacity of this product is 60kgf. Please do not use load anything more than 60kgf onto this product as it damage it and cause injury.
- For maintenance, please use a damp cloth with mild detergent. Do not use gasoline (benzin), alcohol, or alkaline-based detergent or cleanser clean this product.

NO. 004