

LPR Lock Case

● Integrated Push Pull Handle • Set Content and Name of Parts

**Adjustment of Square Lockset & Square Rose Plate**

CLICK!

- After hearing a "click" sound, please tighten the screw some more until a second "click" sound is heard.
- \* Tightening of the screws can be stopped between the two "click"s.
- \* Minor adjustments can be made to make sure that the square parts are level.

**Over-tightening of screws may cause damage to the door or affect the operation of the lock. Please always tighten the screws manually and avoid using electric drills if possible.**

**Strike Plate Note**  
Please only use the strike plate provided by KAWAJUN.

**Latch Note**  
Before installing the front plate onto the lock case, please make sure that the plastic piece around the latch is fitted snugly into the lock case.

**When installing the Coin-turn & Thumb-turn**

Please ensure that both the thumb-turn and coin-turn are in the position as shown in the image before fixing the item in place.

\* May have a risk of lock not working properly if product is not installed in the correct position.

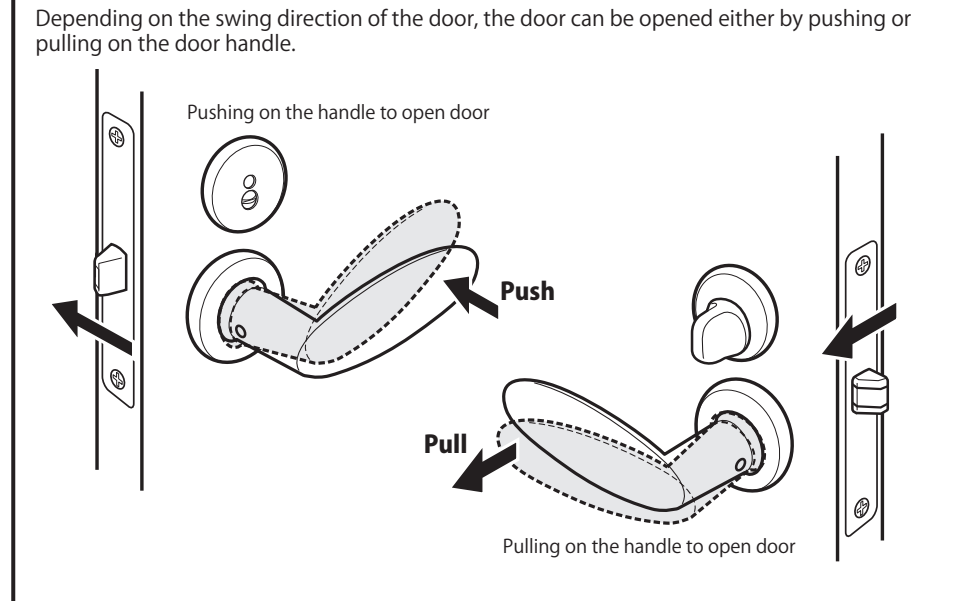
Indicator: White      Thumb-turn: Vertical  
Coin-turn: Vertical

**LEFT (L)**      **RIGHT (R)**

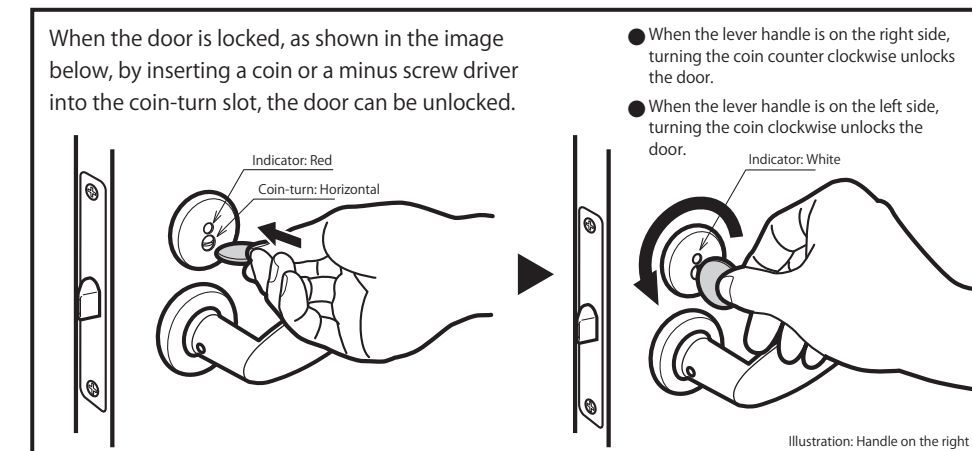
Labels: Push Pull Handle, Coin-turn, LEFT (L), RIGHT (R), LP Lock Case, Thumb-turn Base Plate, Rose (Left), Front Plate, Strike Plate Screws, Strike Plate Note, Latch Note, Lock Case Screws, Rose (Right), Saws for Thumb-turn, Saws for rose with washer, Thumb-turn Cover, Rose Cover Plate, Push Pull Handle, Holding Screw.

● Please do not dispose off this instruction sheet after installation. Instead, please pass it to the user for safe keeping.

● Advantage of Push Pull Handles



● Opening of lock in the events of emergency \*For cases where door is locked from inside.



⚠ About our products

- All products are for indoor use only.
- Please refer to our ordering instructions for special orders.
- Products made of wood may vary slightly in color.
- Stainless-steel products may rust under certain conditions, including exposure to rust in other products.
- All KAWAJUN products are sold as sets with a few exceptions. We will not be responsible for any failures or faults that occur when our products are used with parts from another brand or manufacturer.
- For occasional maintenance, please wipe with a soft, dry cloth. (Excessive cleaning may cause surface scratches) Please use a damp cloth or mild detergent (5-10% dilution) if necessary, and finish off with a soft, dry cloth. Please avoid use of Gasoline (benzin), thinner, alcohol, toilet detergent, mildew removers, chlorine and acidic or alkali-based detergent and cleansers to clean the products, which may result in damage to product surface.

⚠ For your safety

- Please install products according to the instructions provided. Once installed, please make sure that the product works properly. Improper installation may result in injuries due to unstable operations or failure of product.
- Installer must provide product users with the relevant instruction manual once the product is installed.
- Please do not use product for unintended purpose or application. Product failure may result in injuries.
- All products are not intended for outdoor use or in areas where products may be subjected to water splash or high humidity. Corrosion of parts have a high possibility of breakage and may lead to injuries.