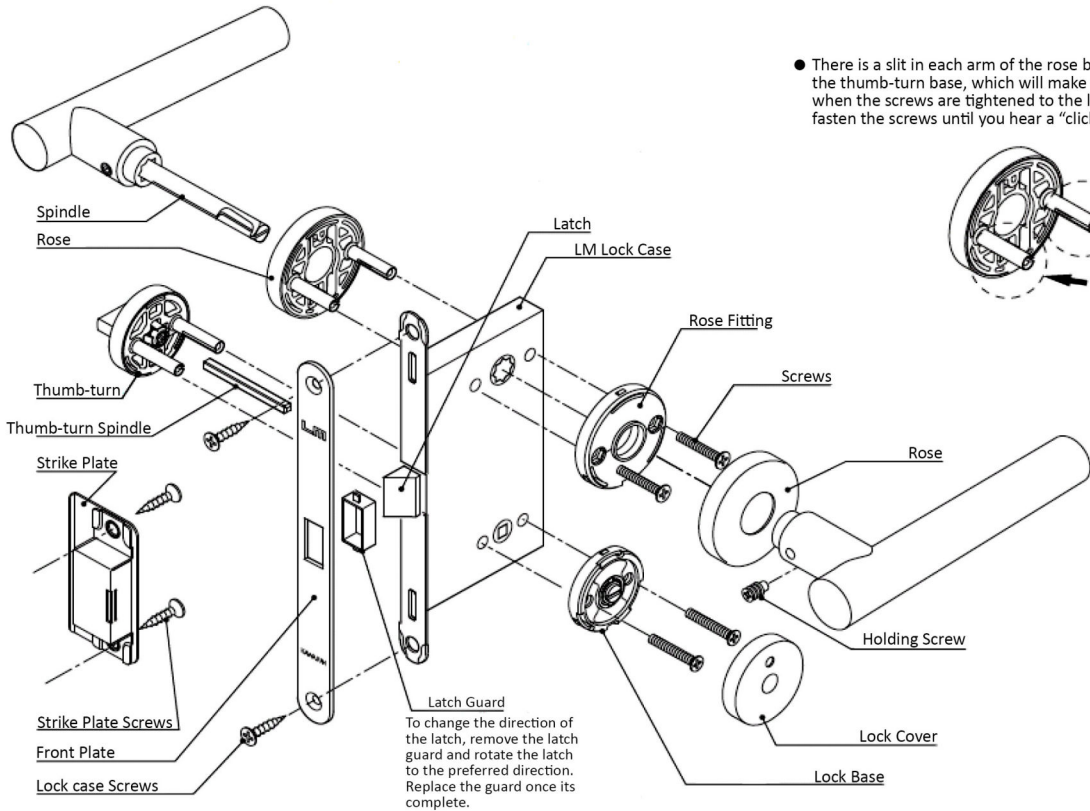
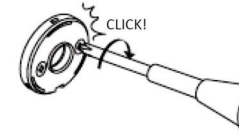
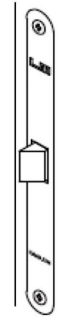
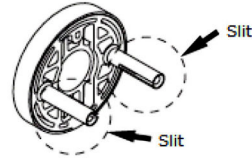


LMR Lock Case



● There is a slit in each arm of the rose base (plastic) and the thumb-turn base, which will make a "click" sound when the screws are tightened to the limit. So please fasten the screws until you hear a "click" sound.



Tip: After hearing a "click" sound, please tighten the screw some more until a second "click" sound is heard.
*Tightening of the screws can be stopped between the two "click"s.

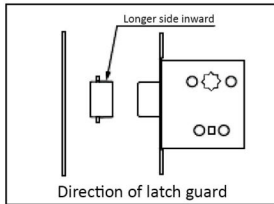
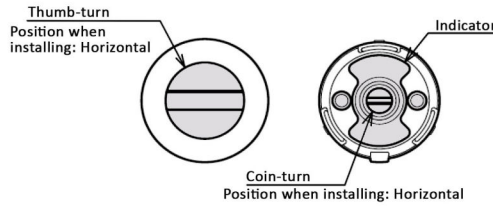
Adjustments of Square Parts

*Minor adjustments can be made to make sure that the square parts are level.

Adjustments before installation

Positioning the Thumb-turn & Coin-Turn before installation

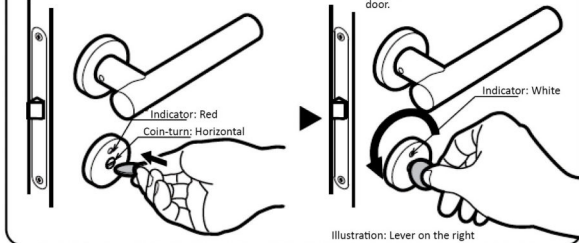
With the lock case in the locked state (latch cannot be pushed inwards), please position the coin-turn and thumb-turn similar to the picture below before fixing the items into place.
*May have a risk of lock not working properly if product is not installed in the correct position.



Opening of lock in the events of emergency *For cases where door is locked from inside.

When the door is locked, as shown in the image below, by inserting a coin or a minus screw driver into the coin-turn slot, the door can be unlocked.

- When the lever handle is on the right side, turning the coin counter clockwise unlocks the door.
- When the lever handle is on the left side, turning the coin clockwise unlocks the door.



About our products

- All products are for indoor use only.
- Please refer to our ordering instructions for special orders.
- Products made of wood may vary slightly in color.
- Stainless-steel products may rust under certain conditions, including exposure to rust in other products.
- All KAWAJUN products are sold as sets with a few exceptions. We will not be responsible for any failures or faults that occur when our products are used with parts from another brand or manufacturer.
- For occasional maintenance, please wipe with a soft, dry cloth. (Excessive cleaning may cause surface scratches) Please use a damp cloth or mild detergent (5-10% dilution) if necessary, and finish off with a soft, dry cloth. Please avoid use of Gasoline (benzin), thinner, alcohol, toilet detergent, mildew removers, chlorine and acidic or alkali-based detergent and cleansers to clean the products, which may result in damage to product surface.



For your safety

- Please install products according to the instructions provided. Once installed, please make sure that the product works properly. Improper installation may result in injuries due to unstable operations or failure of product.
- Installer must provide product users with the relevant instruction manual once the product is installed.
- Please do not use product for unintended purpose or application. Product failure may result in injuries.
- All products are not intended for outdoor use or in areas where products may be subjected to water splash or high humidity. Corrosion of parts have a high possibility of breakage and may lead to injuries.